



POWERZONE TECHNOLOGIES PTE LTD

Blk 9, Kallang Place, #06-09

Kallang Basin Industrial Estate Singapore 339154

Tel : +65-6299 3711 Fax: +65-6299 4911

(Reg No. 201005325H)

Catalogue PL150 OPEN TYPE Perkins Engine 1106A-70TAG2

1. PERKINS -STAMFORD GENERATING SET

ENGINE

The 6 cylinder, 7 litre Perkins 1106 range of ElectropaK engines gives you all the power you need for electric power generation. The engines in the range share a common platform with the option of mechanical and common rail fuel systems enabling use of the same platform over different emissions territories. Reliable, dependable and with a low cost of ownership, the engines can cope with variations in fuel quality that occur in different parts of the world.

ALTERNATOR

Single bearing alternators, brushless, self-exciting, self-regulating with class H insulation, permanent magnet generator system, screen protected and constructed to meet BS 5000. Voltage regulation is within +/- 1.5% from no load to full load. Alternators are tropicalized and drip proof to Ip23.

GENSET CONSTRUCTION

The diesel engine and alternator are mounted on anti-vibration mounting on a fabricated steel skid base. Alternator is coupled to the engine flywheel by means of a flexible disc. The genset is load tested to ensure correct operation and finished with 2 coats of industrial high gloss paint.

GENSET CONTROL PANEL

The DSE6020 is an Auto Start Control Module and the DSE6020 is an Auto Mains (Utility) Failure Control Module suitable for a wide variety of single, diesel or gas, gen-set applications. Monitoring speed, frequency, voltage, current, oil pressure, coolant temperature and fuel level, the modules will display warnings, shutdown and engine status information on the back-lit LCD screen and illuminated LED.

Both modules offer electronic (CAN) and non-electronic (magnetic pickup/alternator sensing) engine versions and offer a number of flexible inputs, outputs and engine protections so the system can be easily adapted to suit a wide range of application demands.



POWERZONE TECHNOLOGIES PTE LTD

Blk 9, Kallang Place, #06-09

Kallang Basin Industrial Estate Singapore 339154

Tel : +65-6299 3711 Fax: +65-6299 4911

(Reg No. 201005325H)

High Performance Productive Power

- Single side servicing for reduced service time and cost.
- Unique Quadram combustion system enables high power output plus low fuel consumption and noise.
- Rated speed is changeable between 1500 rpm or 1800 rpm allowing standard builds to operate at either 50 Hz or 60 Hz.

Reliable Power

- Whenever a Perkins Elektropak engine is put into service, it will never be far from the support provided by a global network of 4000 distributors and dealers, all backed by a parts distribution centre giving 24 hour service, 365 days a year.
- Suitable for operation in ambient temperatures up to 52°C (46 °C if a canopy is fitted).
- Fuelled starting aid for temperatures down to -20 °C.

Durable Power

- Maximum cooling efficiency is provided by a gear driven water pump and independent fan drive.
- Leak free operation is ensured by Viton crankshaft seals and sophisticated controlled swell joints, giving protection in the toughest conditions.
- Inserted valve seats, oil spray cooled pistons and compact plate cooler give enhanced engine life.



POWERZONE TECHNOLOGIES PTE LTD

Blk 9, Kallang Place, #06-09

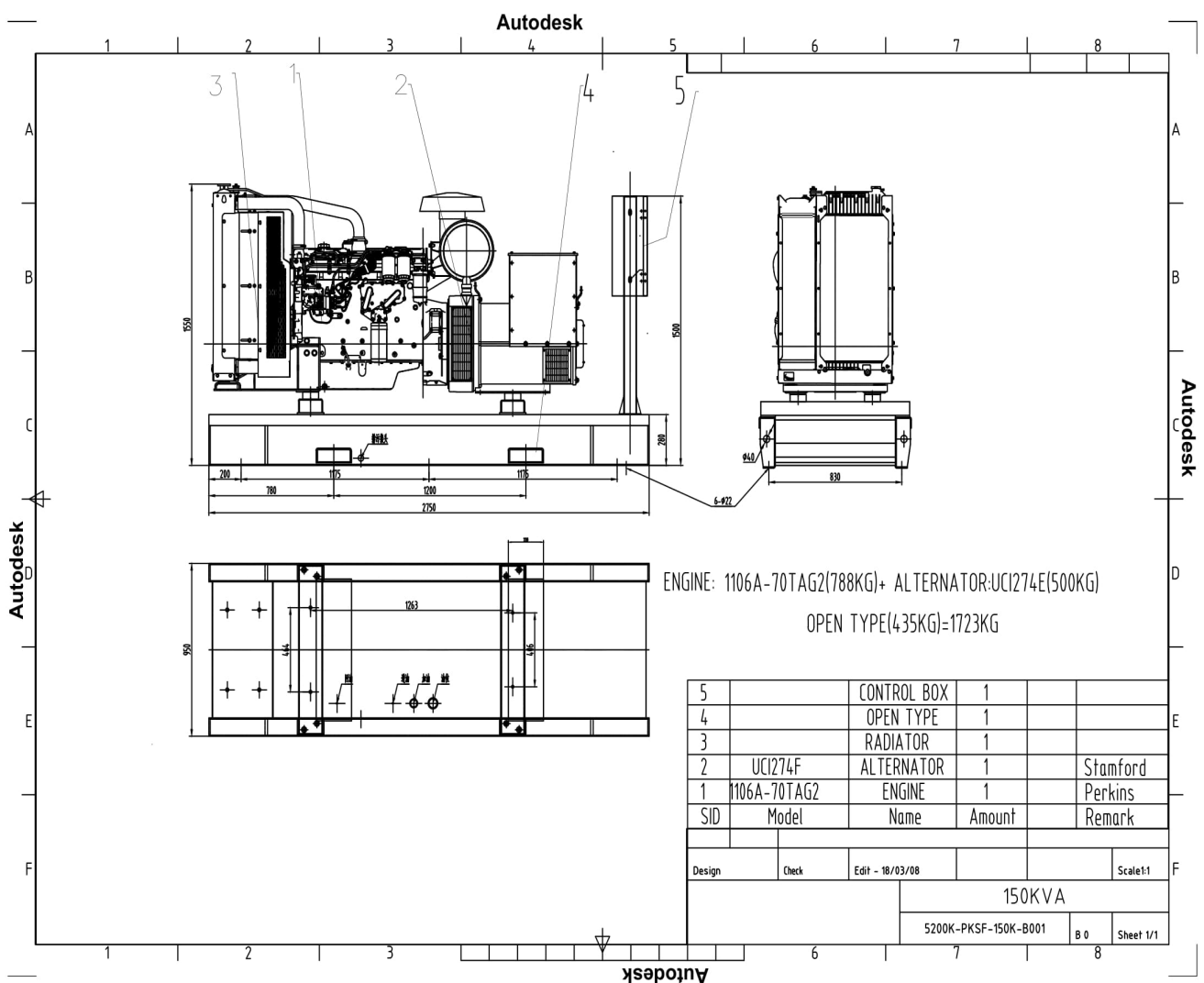
Kallang Basin Industrial Estate Singapore 339154

Tel : +65-6299 3711 Fax: +65-6299 4911

(Reg No. 201005325H)

PL150 OPEN TYPE Perkins Engine 1106A-70TAG2

Genset Drawing





POWERZONE TECHNOLOGIES PTE LTD

Blk 9, Kallang Place, #06-09

Kallang Basin Industrial Estate Singapore 339154

Tel : +65-6299 3711 Fax: +65-6299 4911

(Reg No. 201005325H)

TECHNICAL SPECIFICATION	
GENERATING SET PL150P	TRAKNUS SPEC
ENGINE/MODEL	PERKINS/1106A-70TAG2
Type of Operation	Prime Power
Capacity	150 kVA / 120 kW(Net)
Number of Cylinders	6
Set Outputs	380-220V, 50Hz
Engine Speed rev/min	1500rpm
Overload Capacity	10% overload is available for 1 hour in every 12 hour operation
Cylinder Arrangement	Vertical in-Line
Cycle	4 Stroke
Induction System	Turbocharged after cooled
Combustion System	Direct Injection
Cooling System	Radiator-Water-Cooled
Direction of Rotation	Anti-clockwise, viewed from flywheel
Bore and Stroke	105 x 135 mm
Displacement	7.01 litres
Compression Ratio	16:01
Total Lubricant System Capacity	16.5 litres
Total Coolant Capacity	21 litres
Fuel Consumption, Prime	33.4 l/hr
ALTERNATOR / MODEL	STAMFORD / UCI274F
Protection	IP23
Ampere	228
Cable / Phase (mm²)	120
kVA	160
kW	128
Characteristic	Brushless, Self Excited with AVR
Phase	3
Pole	4
Frequency	50 Hz
Capacity(Base-380V)	380 kVA
Power Factor (PF)	0.8
Insulation System	Class "H"
Overspeed Maximum	2250 rpm
DAILY TANK	200 litres
GENSET OPEN TYPE	PL150P
DIMENSION OPEN(Approx) LxWxH	2580 x 950*1560 mm
WEIGHT (Approx)	1795 kg (net)
GENSET SILENT TYPE	PL150S/B
DIMENSION SILENT (Approx) LxWxH	3250 x 1200 x 1900 mm



POWERZONE TECHNOLOGIES PTE LTD

Blk 9, Kallang Place, #06-09

Kallang Basin Industrial Estate Singapore 339154

Tel : +65-6299 3711 Fax: +65-6299 4911

(Reg No. 201005325H)

WEIGHT (Approx)	2500 kg
PANEL GENSET	DEEP SEA 6020

Genset Pictures

